



Riviera



Located in the heart of Meydan in MBR City, Azizi Riviera is set within a multiphase development of 75 buildings spread across four phases - three of which have already been sold out. Featuring a mega-integrated retail district, a vibrant 5-star hotel, and an executive business center, Azizi Riviera evokes the classic Mediterranean Riviera lifestyle with a modern and contemporary touch.

THE ART OF LIVING IN THE RIVIERA



Bringing you the best of beachside living, leisure and entertainment, Riviera Rêve complements your already distinguished lifestyle. Architecturally inspired by the movement of water across the lagoon, the three towers have been built with solar panels and vertical greenery for greater sustainability and air purity. A development as unique and rare as you.

DESIGNED TO ENRICH LIVES





AZIZI

A ONE-OF-A-KIND DESTINATION



AN ARRIVAL LIKE NO OTHER

Surround yourself with timeless style, service and sophistication at Riviera Rêve. With separate entrances for each tower, you can enjoy a designated drop-off area as well as direct access to a walkway connecting you to the retail outlets and crystal lagoon. The space also features a 7ft wall cascading from the rooftop infinity pool.

Striking, exquisite, and bespoke, Riviera Azure is a statement of high-end beachfront living featuring uniquely designed apartments and penthouses with stunning views of the crystal lagoon and Dubai's finest skyline. This mid-rise residential building has also been designed with solar panels and a swish of greenery running from top to bottom.

AN OASIS OF LUXURY & AESTHETICS







THE WORLD IS YOURS
TO EXPLORE

Riviera combines the best of Mediterranean design with modern architecture to create the ideal place for 21st century community living. Enjoy infinity pools, outdoor dining on the French-Riviera-inspired boulevard, exclusive boutiques and retail outlets, indoor and outdoor playgrounds, premium laundry service, automatic carwash service, and much more.

RUSTIC CHARM, MODERN TWIST



BOUNDLESS OPPORTUNITIES
AWAIT YOU





Riviera Beachfront ups the game of waterfront lifestyle for its residents with its perfect location overlooking the beautiful crystal lagoon and white sandy beaches. Walk along the beachfront and soak up the serene views and Mediterranean ambience. This destination, with its iconic association with the French Riviera, provides a pleasant, tranquil, and family-friendly environment.

AN IDYLIC WATERFRONT LIFESTYLE







THE THERAPY OF
WATERFRONT LIVING

Created with contemporary lifestyles in mind, Riviera offers intuitiveness and sophistication in every way. With premium wood joinery and finishings, bespoke integrated lighting, and Italian marble flooring, every detail of your home has been curated to perfection.

STEP INTO UNRIVALLED LUXURY





ENTER IN ELEGANCE

Experience that hotel-like feeling, every time you walk to your door. With calacatta marble flooring, 2.3 metre veneered doors, statement wall sconces and security via an innovative smart system - coming home has never felt so rewarding.

Created for those with elevated lifestyles, each apartment exudes airy, open floor plans with floor-to-ceiling balcony windows. With the ability to fully open up, the living space is extended, flooding in natural light and sweeping views across Downtown Dubai. With an effortless feeling of space and a functional design, Riviera is a modern-day classic in the making.

YOUR OWN PERSONAL REALM



Elegance and finesse are integral to the style of your living quarters. From the quartz stone countertops, integrated pendant lighting, natural wood elements to the built-in pantry - everything has been presented with flawless execution.



Modern in style yet beautifully functional, Riviera caters to those with a passion for living exceptionally well. Where you can define your standard of luxury - a place you don't just call home, but truly feel at home.



With the unexpected luxury of space, relish in the elegance of your master bedroom. Designed using an open, expansive plan surrounded by floor-to-ceiling glass, each master bedroom allows the morning light to flood in while offering panoramic views of the magnificent crystal lagoon.

SPACIOUS SPLENDOUR

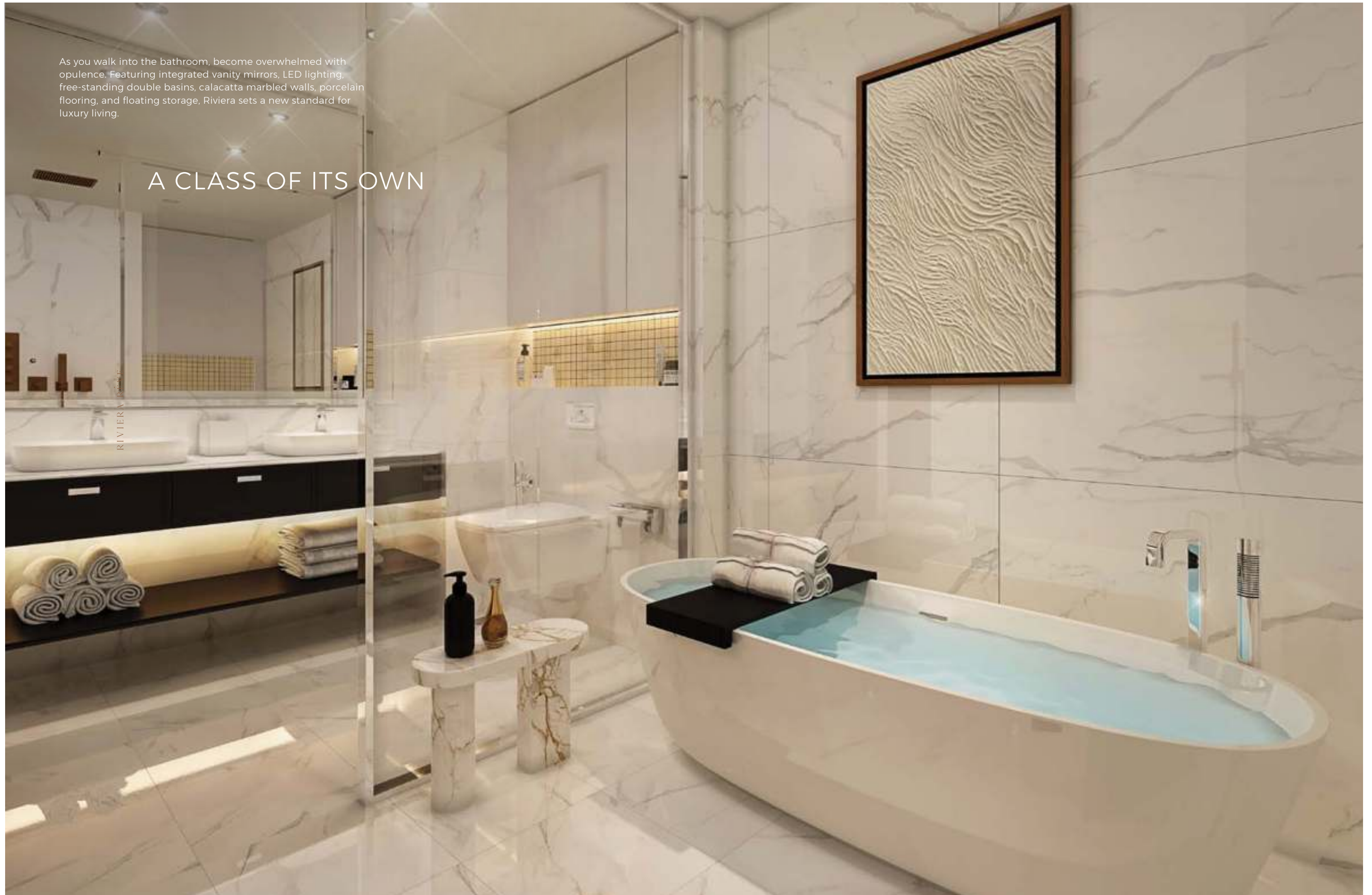


With bespoke walk-in-curtains, velvety smooth headboards, chandelier lighting fixtures and premium gold finishings, everything has been tastefully designed to accentuate your lifestyle - naturally benchmarked against the most sought-after residences.



As you walk into the bathroom, become overwhelmed with opulence. Featuring integrated vanity mirrors, LED lighting, free-standing double basins, calacatta marbled walls, porcelain flooring, and floating storage, Riviera sets a new standard for luxury living.

A CLASS OF ITS OWN



Bask in the glory of your very own private terrace overlooking magical views. Offering maximum seclusion in a tranquil setting, our lagoon-facing residences provide endless views across Dubai's iconic skyline. Dine, entertain or simply relax on your exclusive balcony and live the 'high-life' every day.

VIEWS, PRIVY TO FEW



IMMERSE
INTO INFINITY

Take a refreshing dip in the half Olympic-sized infinity pool overlooking breathtaking views across the crystal blue lagoon or soak up the sun on the wooden pool deck. With iconic sunsets, laid-back tunes and cosy cabanas to nestle into, this is the perfect place to lay back and enjoy the sunshine.



WORKOUT WITH A VIEW

Experience a state-of-the-art gym and fitness studio with full glass windows overlooking Dubai's magnificent skyline, the infinity pool and the waterfall feature. This private, residents-only space offers a mix of innovative cardio machinery, spin bikes, treadmills and a restorative yoga room to help you stay on top of your well-being, both physically and mentally.



EMBRACE AN
ACTIVE LIFESTYLE

EXPLORE NEW HORIZONS





DIVE INTO AN OCEAN
OF POSSIBILITIES

RUN ALONG
THE RIPPLING WATERS



Brimming with boutique shops, fine dining restaurants, quaint cafes, recreational facilities, and everyday amenities, the French-Riviera-inspired boulevard is a one-of-a-kind experience in the heart of Dubai. Enjoy a vibrant, dynamic lifestyle, just moments from your door.

A VIBRANT BOULEVARD







With beautifully landscaped walk-in areas adorned with the right blend of greenery to assure you the perfect commune with nature, Riviera is undoubtedly a breath of fresh air.

SURROUNDED BY LUSH GREENERY



Feast with friends, family and loved ones on our expansive rooftop terrace overlooking Dubai's skyline. With premium grills, lounge chairs and seating areas, this is the perfect place to enjoy a delicious BBQ on a balmy day.

DINE AL FRESCO STYLE





ENTERTAIN



YOUR SENSES

Make the most of Dubai's incredible weather and spend your days and nights entertaining outdoors - screening live sports, iconic events and blockbuster movies, there's something fun for the whole family. When Summer hits, cool down in our Clubhouse or rent out our Indoor Home Theatre for a night in with friends and family.



Whether you want to take a dip in the grand infinity pool, dine outdoors along the boulevard, shop the incredible retail outlets and boutiques or let the kids unleash their adventurous side in the indoor and outdoor playground, you'll live exceptionally well at Riviera. You will also enjoy personalized perks such as a 5-star laundry service and customized carwash cleaning.

AWE-INSPIRING AMENITIES

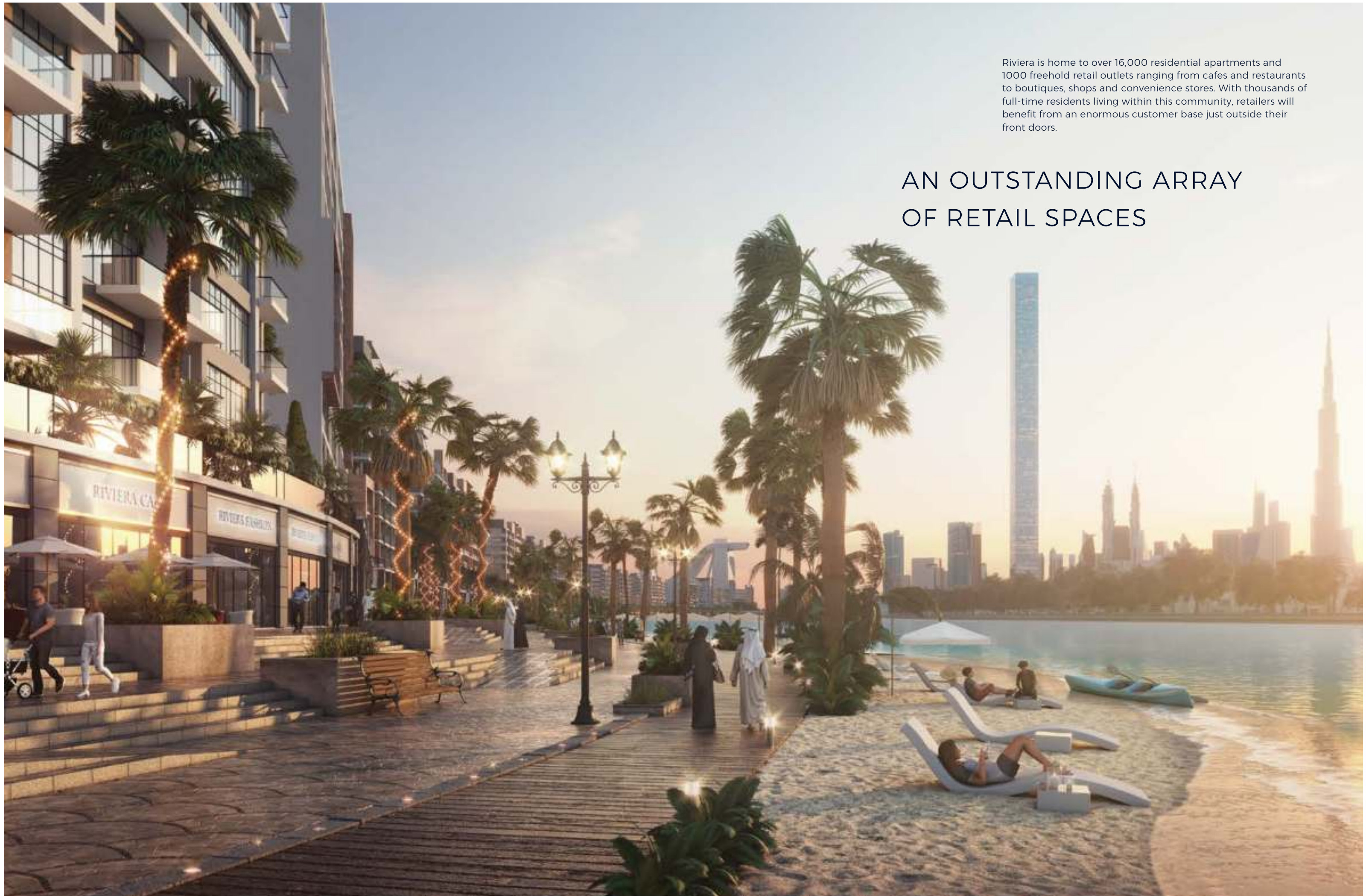


ENJOY ENTHRALLING MATCHES



AIM FOR THE PERFECT
DUNK SHOTS





Riviera is home to over 16,000 residential apartments and 1000 freehold retail outlets ranging from cafes and restaurants to boutiques, shops and convenience stores. With thousands of full-time residents living within this community, retailers will benefit from an enormous customer base just outside their front doors.

AN OUTSTANDING ARRAY OF RETAIL SPACES



COFFEE HOUSE

RIVIERA CAFE

PARIS

SUSHI STATION

ST TROPEZ

THE MED

THE SEA HOUSE

JIN CHU

LIFE DEEP

J. HENRI

JOY

SHOPS & BOUTIQUES



CAFES & RESTAURANTS



KEY LANDMARKS

1 MEYDAN RACECOURSE
1 minutes from Riviera

2 DUBAI INTERNATIONAL AIRPORT
10 minutes from Riviera

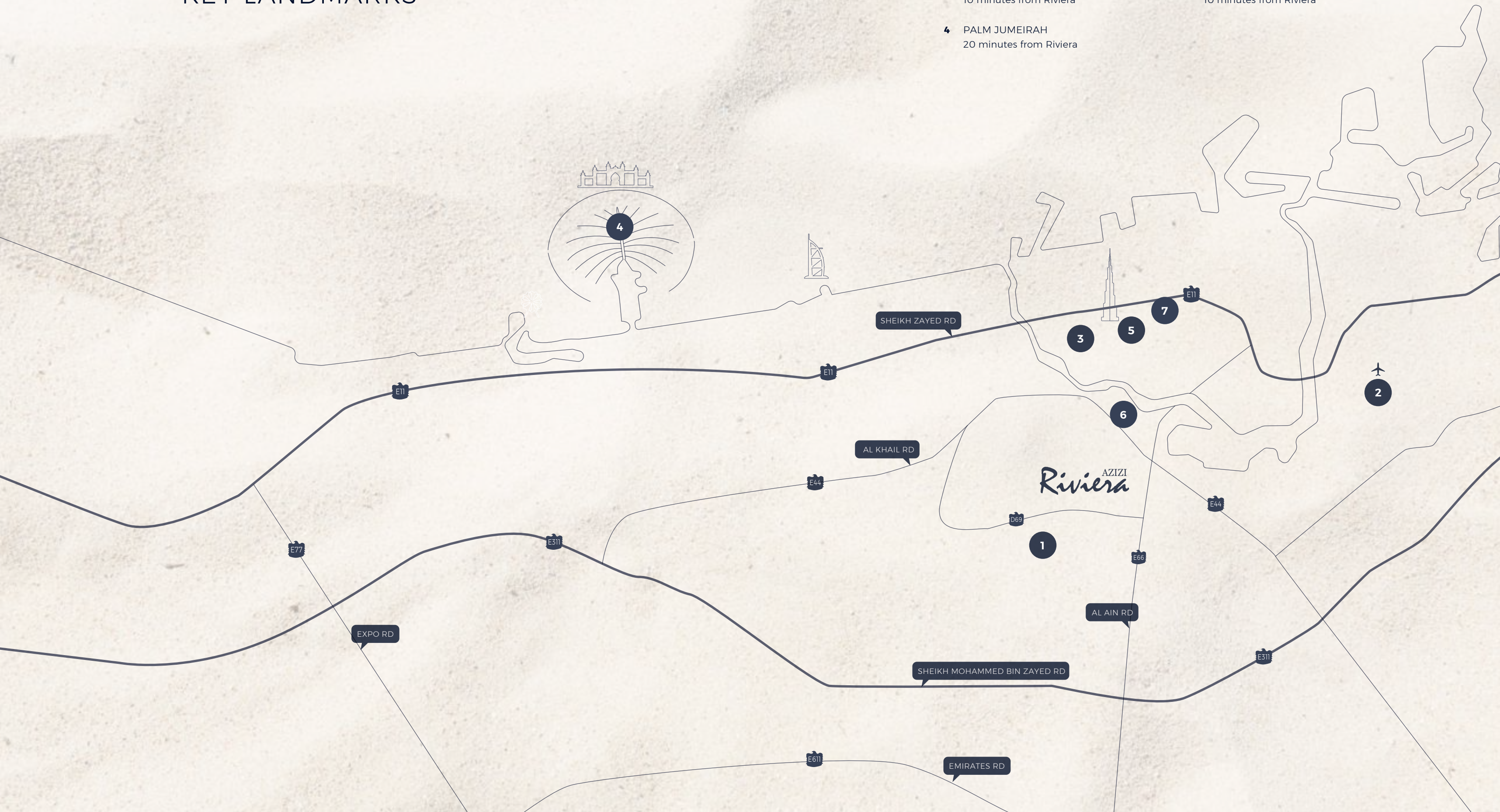
3 DIFC / BUSINESS BAY
10 minutes from Riviera

4 PALM JUMEIRAH
20 minutes from Riviera

5 DOWNTOWN DUBAI
7 minutes from Riviera

6 DUBAI DESIGN DISTRICT
5 minutes from Riviera

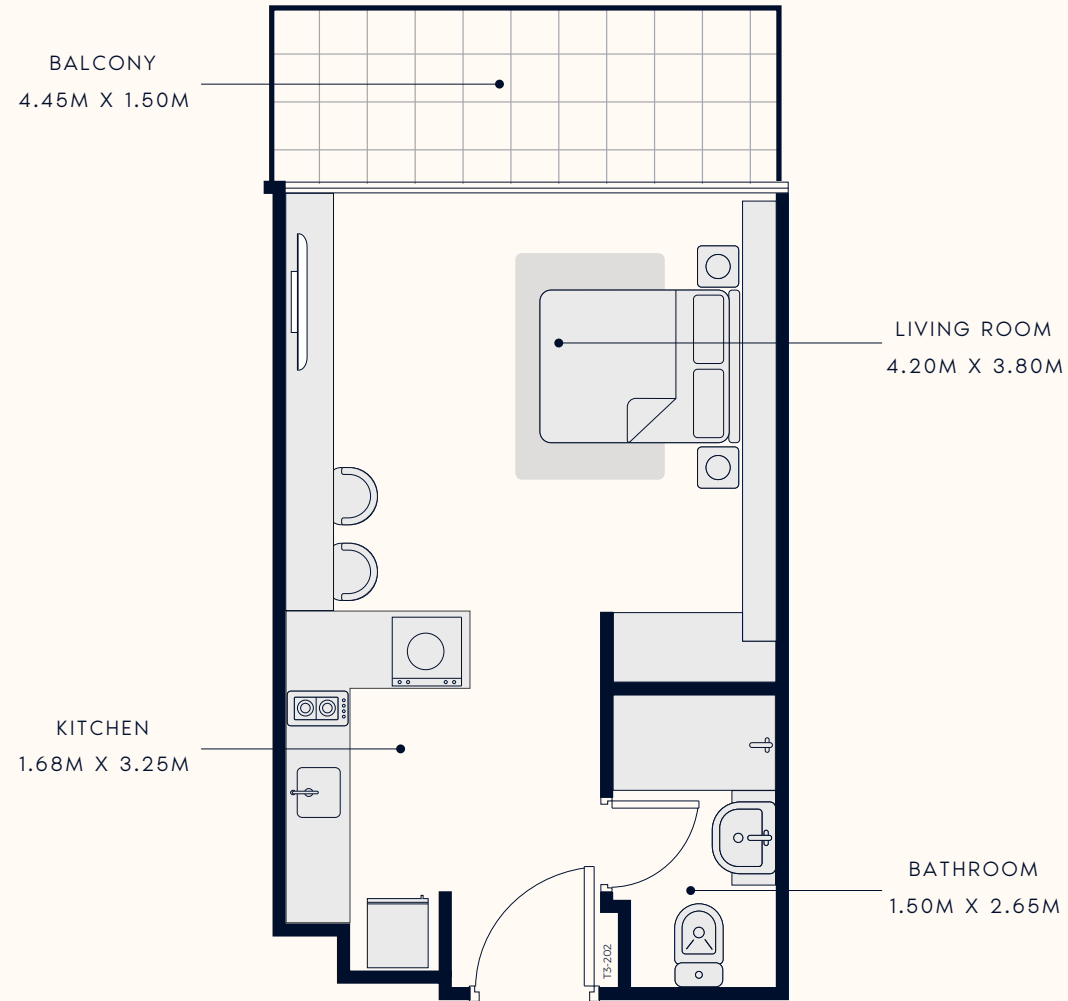
7 MUSEUM OF THE FUTURE
10 minutes from Riviera



FLOOR PLAN

STUDIO TYPE 1

1ST TO 18TH FLOOR



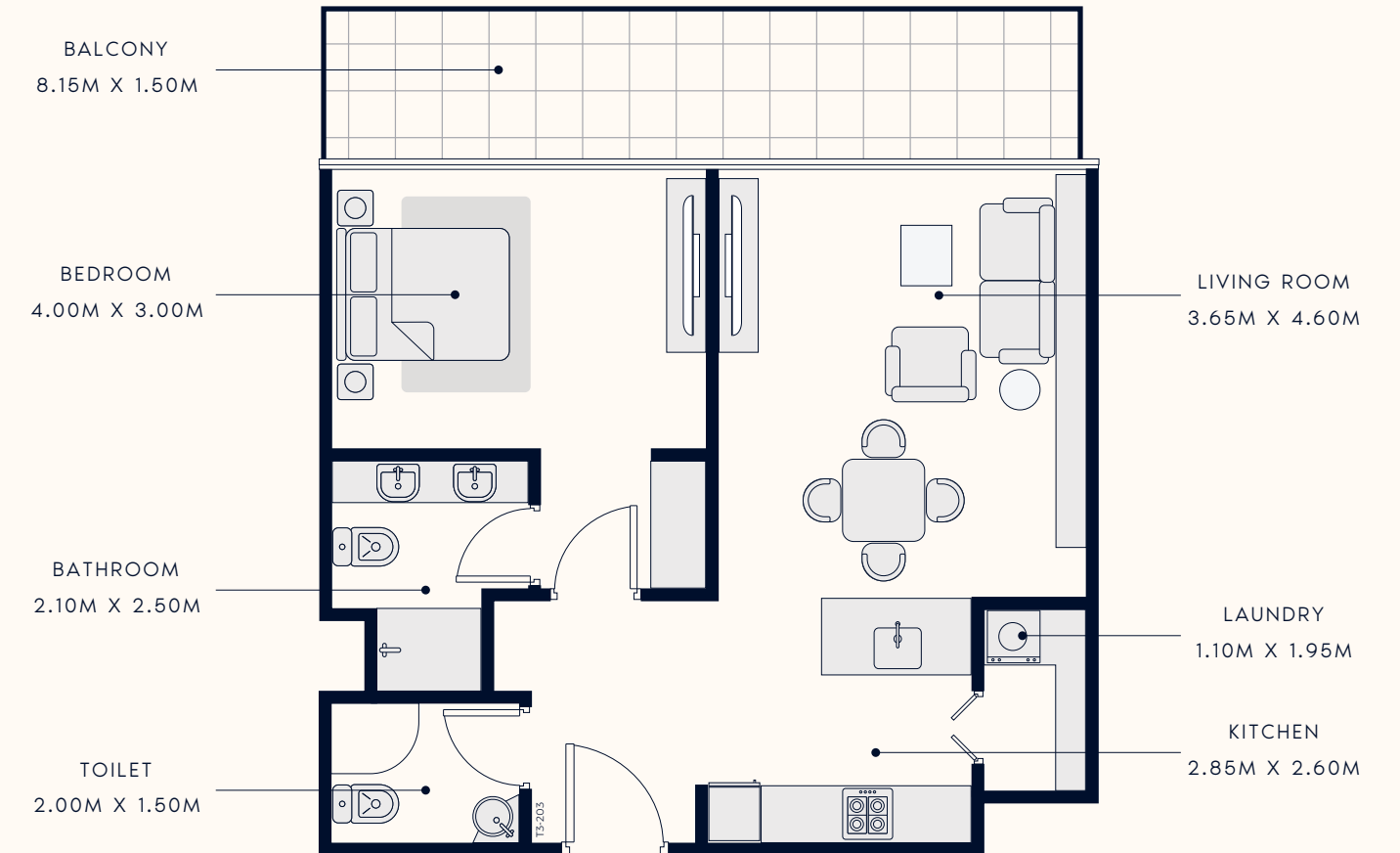
SUITE AREA : 364.36 SQ.FT
TOTAL AREA : 444.55 SQ.FT

TYPICAL UNITS

FLOOR PLAN

1 BEDROOM TYPE 1

1ST TO 26TH FLOOR



SUITE AREA : 647.77 SQ.FT
TOTAL AREA : 793.19 SQ.FT

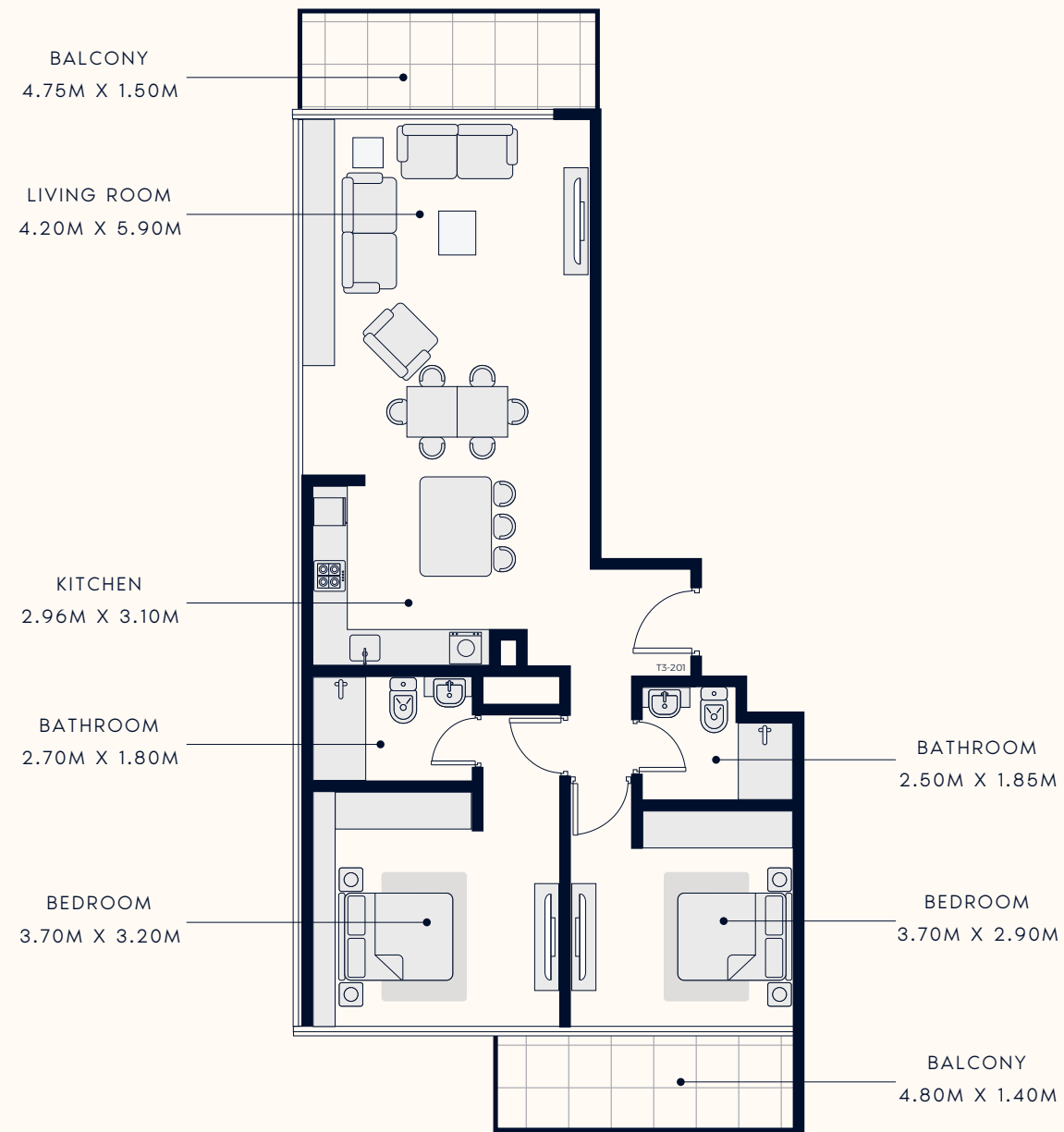
TYPICAL UNITS



FLOOR PLAN

2 BEDROOM TYPE 1

1ST TO 18TH FLOOR



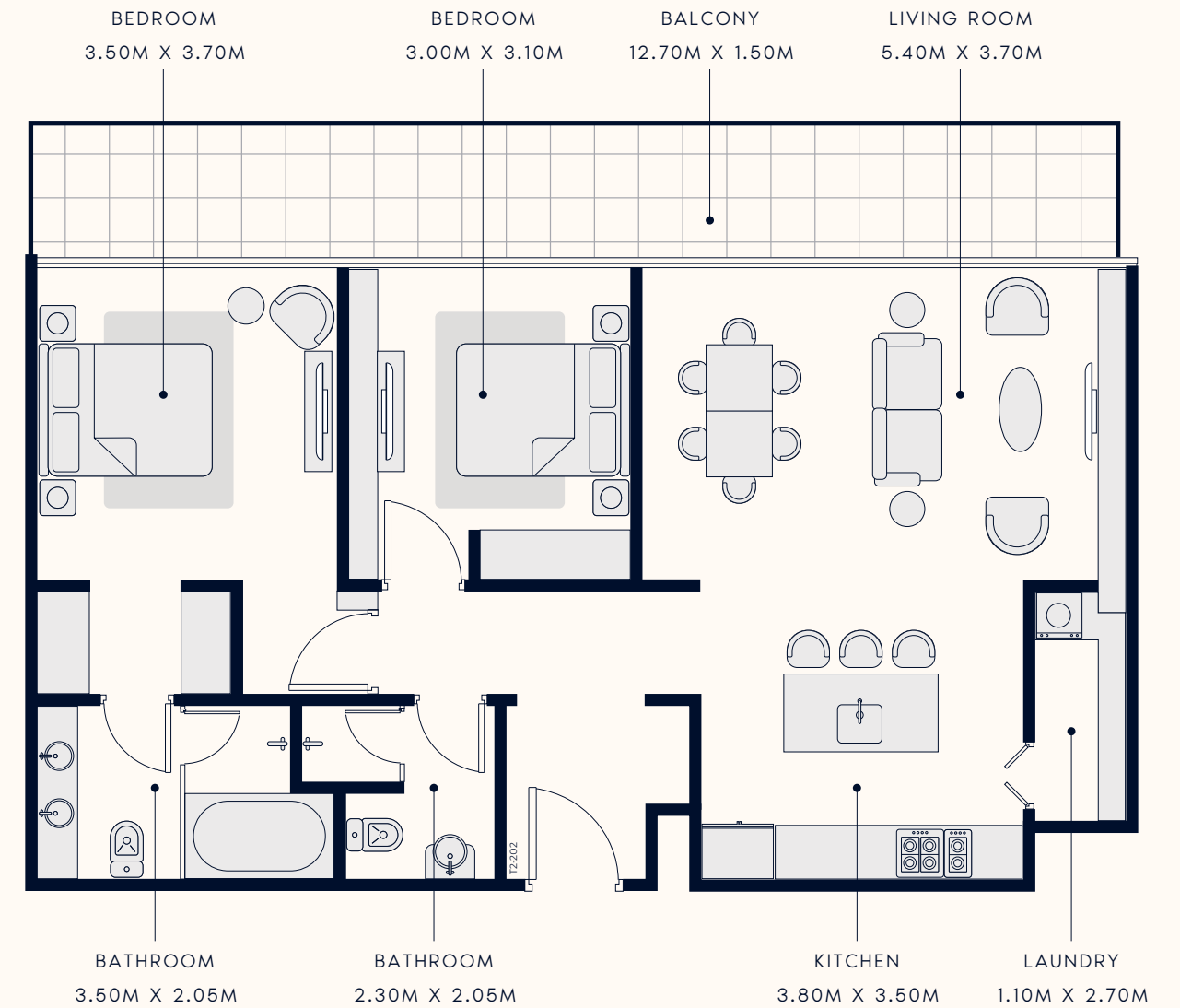
SUITE AREA : 1058.84 SQ.FT
TOTAL AREA : 1226.65 SQ.FT

TYPICAL UNITS

FLOOR PLAN

2 BEDROOM TYPE 2

2ND TO 18TH FLOOR



SUITE AREA : 1018.37 SQ.FT
TOTAL AREA : 1243.88 SQ.FT

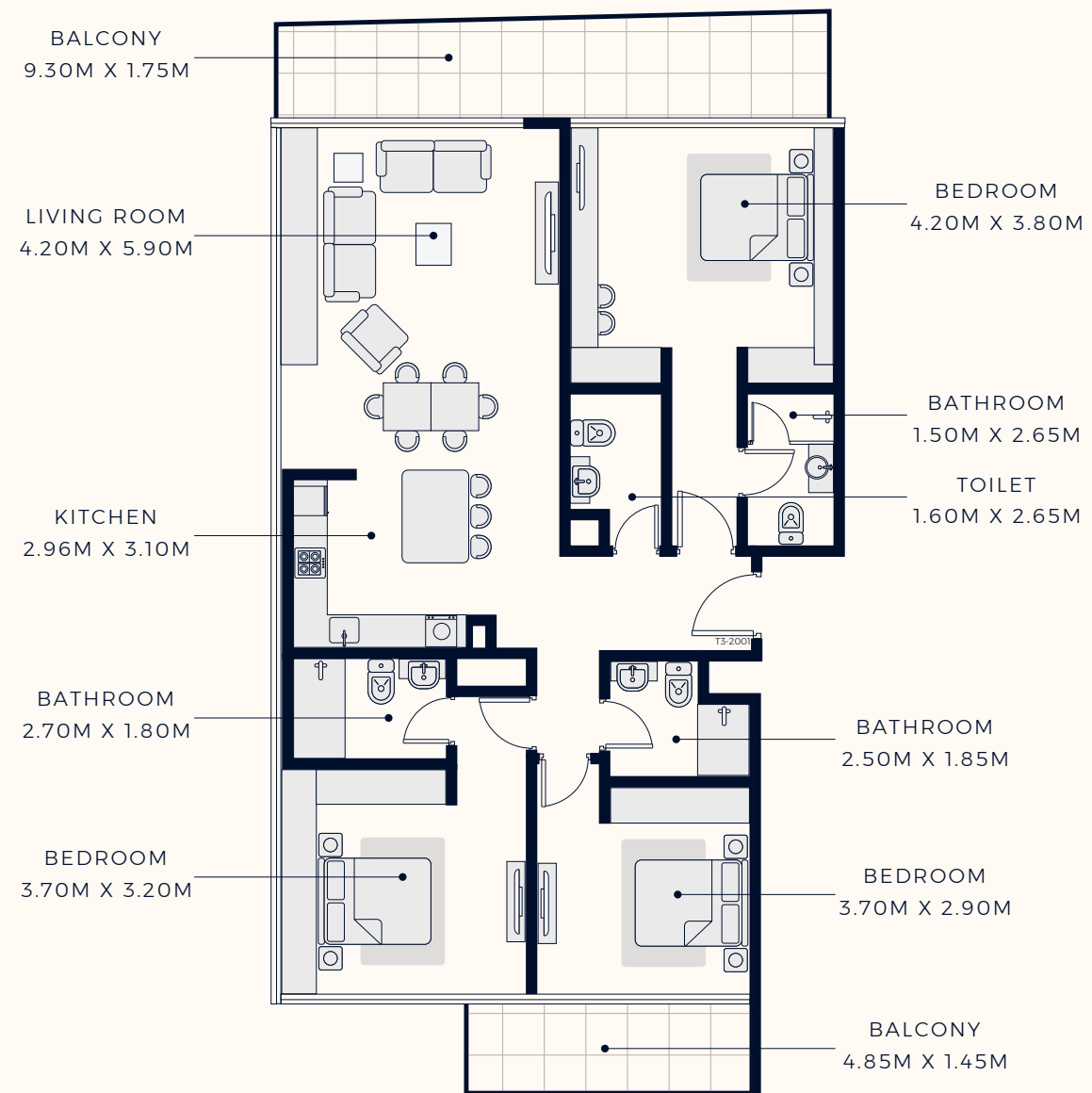
TYPICAL UNITS



FLOOR PLAN

3 BEDROOM TYPE 1

19TH TO 26TH FLOOR



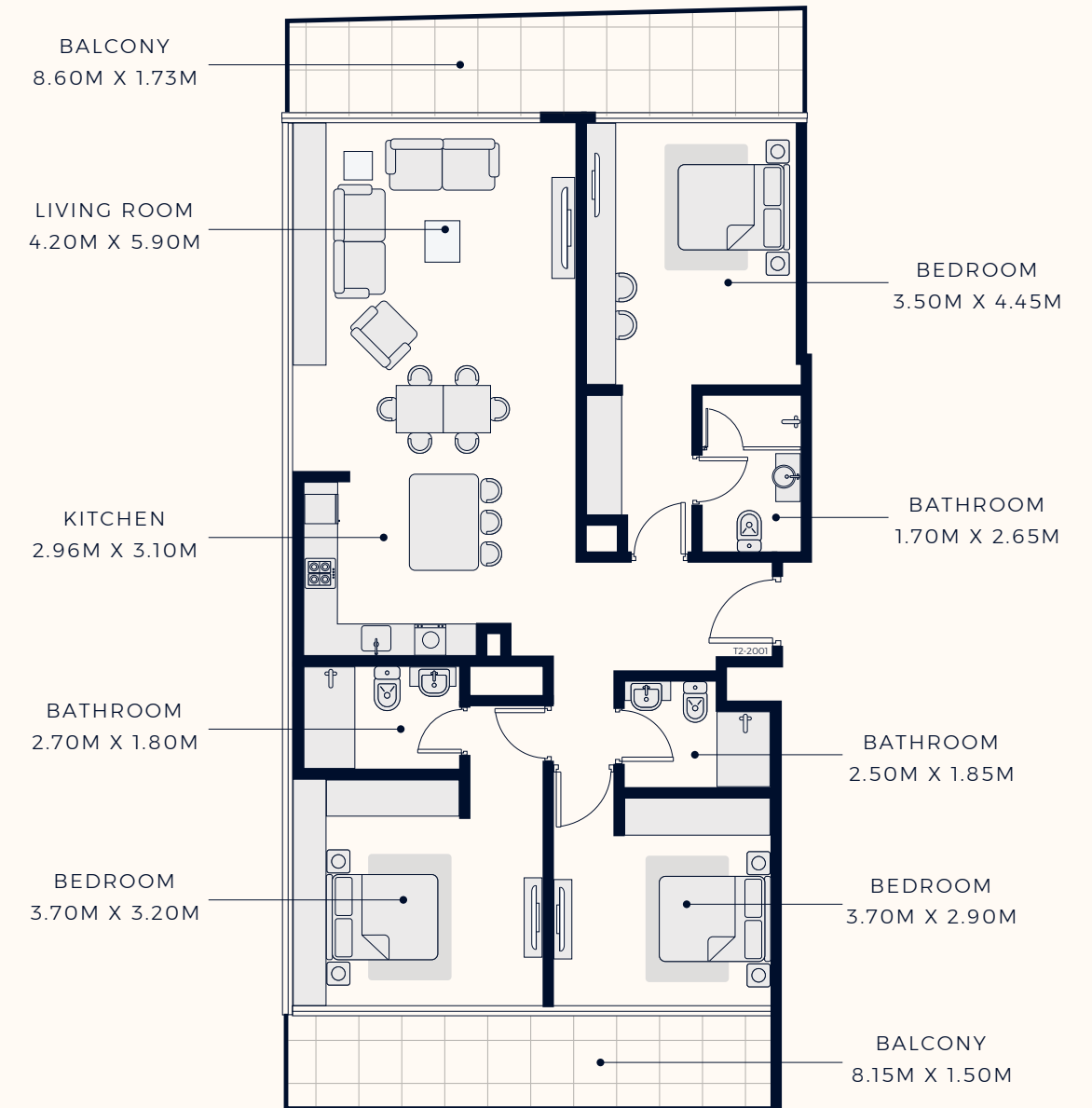
SUITE AREA : 1455.39 SQ.FT
TOTAL AREA : 1717.70 SQ.FT

TYPICAL UNITS

FLOOR PLAN

3 BEDROOM TYPE 2

19TH TO 26TH FLOOR



SUITE AREA : 1383.27 SQ.FT
TOTAL AREA : 1691.76 SQ.FT

TYPICAL UNITS

